

ACCESSORIES AND SPARE PARTS FOR RODLESS CYLINDERS



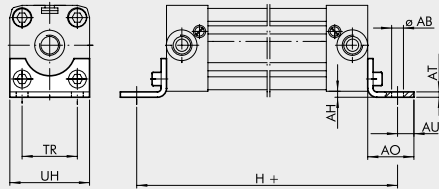
FIXINGS FOR RODLESS STD, "V" GUIDE, WITH BALL RECIRCULATING GUIDE CYLINDERS

ACTUATORS

ACCESSORIES AND SPARE PARTS FOR RODLESS CYLINDERS

FOOT Ø 16; 25

+ = ADDED STROKE

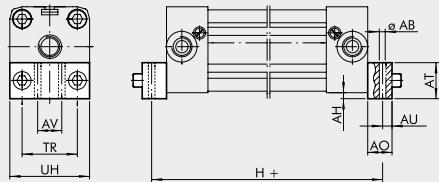


Code	Ø	ØAB	AH	AO	AT	AU	TR	UH	H	Weight [g]
W0950167001	16	3.6	1.5	14	1.6	4	18	26	150	10
W0950257001	25	5.5	2	22	2.5	6	27	40	232	32

Note: Individually packed with 2 screws

FOOT Ø 32; 40

+ = ADDED STROKE

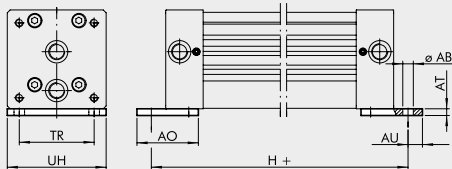


Code	Ø	ØAB	AH	AO	AT	AU	AV	TR	UH	H	Weight [g]
W0950327001	32	6.6	4	25	20	8	20	36	51	284	88
W0950407001	40	9	2	25	20	11.5	30	54	71	327	112

Note: Individually packed with 2 screws

FOOT Ø 63

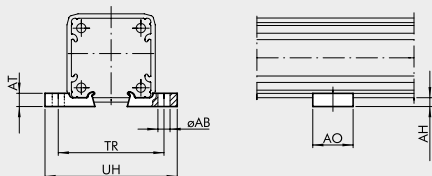
+ = ADDED STROKE



Code	Ø	ØAB	AT	AO	AU	TR	UH	H	Weight [g]
W0950637001	63	11	7	64	15	78	103	460	360

Note: Individually packed with 2 screws

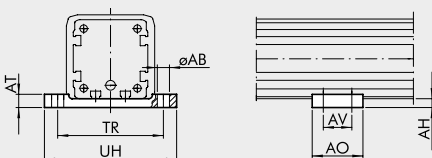
INTERMEDIATE FOOT Ø 16; 25 FOR STD AND "V" GUIDE



Code	Ø	ØAB	AH	AO	AT	TR	UH	Weight [g]
W0950167031	16	5.5	3	20	5	41	53	4
W0950257031	25	5.5	4	20	6	48	60	6
0950254094*	25	5.5	4	20	6	48	60	6

Note: Individually packed.
* For the "V" guide version only

INTERMEDIATE FOOT Ø 32; 40 FOR STD AND "V" GUIDE



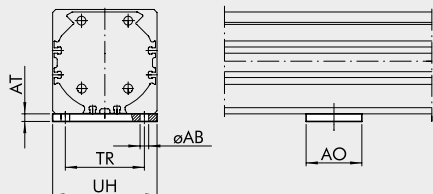
Code	Ø	ØAB	AH	AO	AT	AV	TR	UH	Weight [g]
W0950327032	32	6.5	5	55	8	40	61.5	73	72
W0950407032	40	6.5	7	60	8	45	70-75	85	104

Note: plate supplied complete with 4 screws, 4 fixing plates

INTERMEDIATE SUPPORT Ø 63 FOR VERSION STD, "V" GUIDE AND VERTICAL POSITION BALL RECIRCULATING

Code	Ø	ØAB	AO	AT	TR	UH	Weight [g]
W0950637032	63	8.5	55	7.5	78	103	330

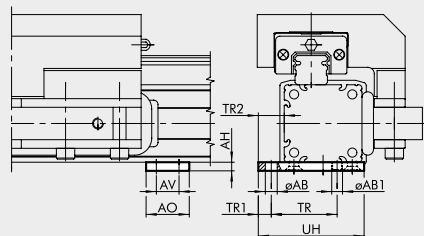
Note: plate supplied complete with 4 screws, 4 fixing plates



INTERMEDIATE SUPPORT Ø 16 to 25 FOR BALL RECIRCULATING

Code	Ø	ØAB	ØAB1	AH	AO	AV	TR	TR1	TR2	UH
W0950164004	16	3.5	M3	3	12	6	20	4	8	32.5
W0950254004	25	5.5	M5	4	20	10.5	30.5	6	12	49

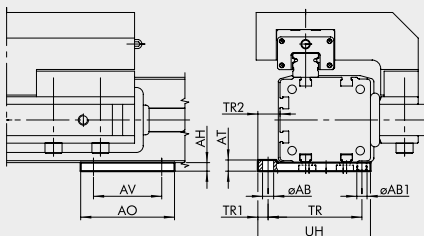
Note: Supplied complete with 4 screws



INTERMEDIATE SUPPORT Ø 32 to 40 FOR BALL RECIRCULATING

Code	Ø	ØAB	ØAB1	AH	AO	AT	AV	TR	TR1	TR2	UH
W0950324004	32	6.5	M6	5	55	5	40	55	6	13	66
W0950404004	40	6.5	M6	6.6	60	8	45	63	7.5	15	77

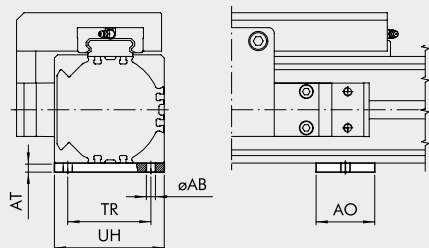
Note: Supplied complete with 4 screws, 4 plates.



INTERMEDIATE SUPPORT KIT Ø 63 FOR HORIZONTAL POSITION BALL RECIRCULATING

Code	Ø	ØAB	AH	AO	AT	TR	UH
W0950637036	63	8.5	7.5	55	8.5	78	103

Note: Supplied complete with 4 screws, 4 plates.

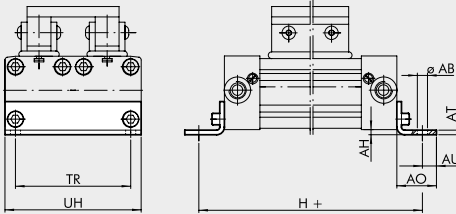


NOTES

FIXINGS FOR RODLESS CYLINDER SERIE DOUBLE

FOOT Ø 16; 25

+ = ADD STROKE

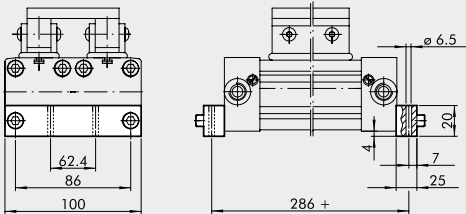


Code	Ø	ØAB	AH	AO	AT	AU	TR	UH	H	Weight [g]
W0950168001	2x16	3.6	1.5	14	1.6	4	42	51	150	18
W0950258001	2x25	5.5	2	22	2.5	6	63	72	232	54

Note: Individually packed complete with 2 screws

FOOT Ø 32

+ = ADD STROKE

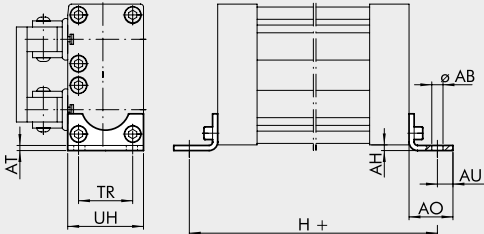


Code	Description	Weight [g]
W0950328036	Foot DOUBLE Ø 32	156

Note: Individually packed complete with 2 screws

VERTICAL FOOT Ø 16; 25

+ = ADD STROKE

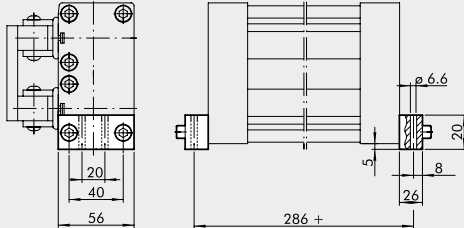


Code	Ø	ØAB	AH	AO	AT	AU	TR	UH	H	Weight [g]
W0950167001	2x16	3.6	1.5	14	1.6	4	18	26	150	10
W0950257001	2x25	5.5	4	22	2.5	6	27	40	232	32

Note: Individually packed complete with 2 screws

VERTICAL FOOT Ø 32

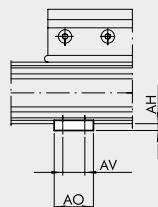
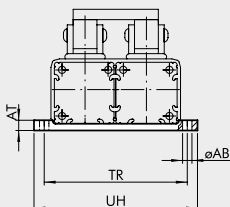
+ = ADD STROKE



Code	Description	Weight [g]
W0950328035	Vertical foot Ø 32	92

Note: Individually packed complete with 2 screws

INTERMEDIATE FOOT Ø 16 to 32



Code	Ø	ØAB	AH	AO	AT	AV	TR	UH	Weight [g]
W0950168037	2x16	3.5	3	12	6	6	60.5	64	16
W0950258037	2x25	5.5	4	20	6	10.5	84.5	96	34
W0950328037	2x32	6.5	5	55	8	40	111.5	123	96

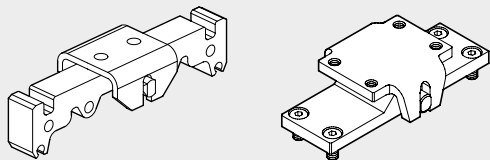
Note: Supplied complete with 8 screws, 8 fixing plates (plates for Ø 32 only)

ACCESSORIES FOR CONVERTING STD RODLESS CYLINDERS INTO SWING CYLINDERS

KIT TO TRANSFORM INTO SWING VERSION

Ø16 to 40

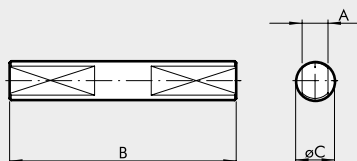
Ø63



Code	Ø	Weight [g]
W0950167035	16	34
W0950257035	25	118
W0950327035	32	450
W0950327035	40	450
W0950637035	63	810

Note: Ø 16 to 40: Supplied complete with 1 adaptor, 1 support, 1 pin, 1 bushing
 Ø 63: Supplied complete with 1 plate, 1 support, 1 pin, 2 bushings, 4 screws

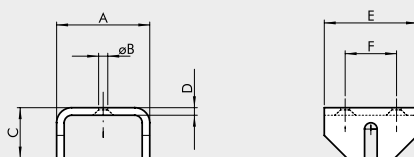
DRIVE PIN



Code	Ø	A	B	ØC	Weight [g]
W0950167034	16	2.9	28	5	6
W0950257034	25	5	42	8	16
W0950327034	32	8	70	12	52
W0950327034	40	8	70	12	52
W0950637034	63	10	82	14	100

Note: Individually packed

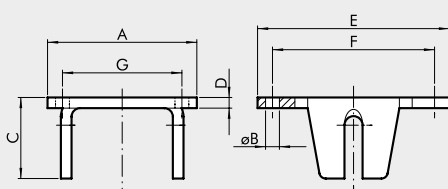
SWING SUPPORT Ø 16; 25



Code	Ø	A	ØB	C	D	E	F	Weight [g]
W0950167033	16	25	4.5	13	2	20	10	14
W0950257033	25	37	5.5	20	3	30	16	40

Note: Individually packed

SWING SUPPORT Ø 32; 40; 63



Code	Ø	A	ØB	C	D	E	F	G	Weight [g]
W0950327033	32	70	6.5	38	5	90	75	55	274
W0950327033	40	70	6.5	38	5	90	75	55	274
W0950637033	63	80	M8	32	8	80	65	37	400

Note: Individually packed

SENSOR MAGNETIC

RETRACTABLE SENSOR

SENSOR, SQUARE TYPE

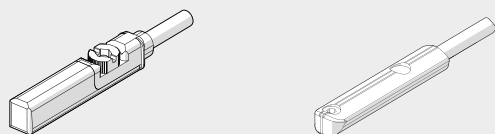
Latest generation,
secure fixing

SENSOR, OVAL TYPE

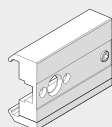
Traditional

For codes and technical data, see **chapter A6**.

Note: For rodless cylinders Ø25 having "V" guide use only the HS version of the oval type.



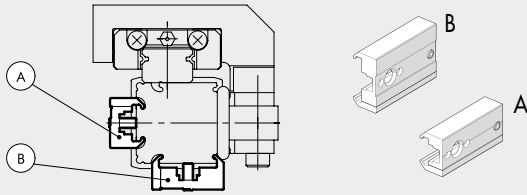
SENSOR SUPPORT Ø 16; 25



Code	Description
0950164001	Sensor support STD

Note: Supplied with 1 stud pin, 2 screws

SENSOR SUPPORT Ø 16 FOR RODLESS CYLINDER WITH BALL RECIRCULATING

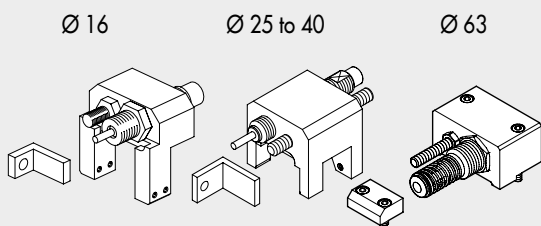


Code sensor support	Description sensor support	Type sensor support	Mounting on the carriage opposite side	Mounting on the guide opposite side
0950164003	Sensor support short	A	•	
0950164001	Sensor support std	B		•

Note: Supplied complete with 2 screws, 1 pin

SHOCK ABSORBERS

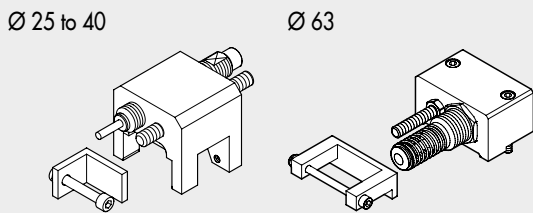
ADJUSTABLE LIMIT SWITCH AND SHOCK ABSORBERS KIT



Code	Description	Weight [g]
0950164002	Rodless cylinder limit switch and shock absorbers Ø 16	125
0950254002	Rodless cylinder limit switch and shock absorbers Ø 25	260
0950324002	Rodless cylinder limit switch and shock absorbers Ø 32	460
0950404002	Rodless cylinder limit switch and shock absorbers Ø 40	730
0950634002	Rodless cylinder limit switch and shock absorbers Ø 63	1620

Note: Supplied complete with 1 shock absorber support, 1 standard shock absorber, 1 shock absorber nut, 1 limit switch grub screw, 1 grub screw nut (2 for Ø 63), 1 bracket, 1 bracket screw, 4 locking grub screws (for Ø 16 and Ø 25), 4 locking plates and 4 screws (for Ø 32 and Ø 40)

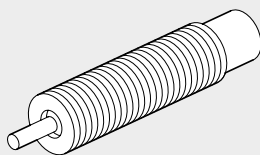
ADJUSTABLE LIMIT SWITCH AND SHOCK ABSORBERS KIT FOR RODLESS CYLINDER WITH "V" GUIDE



Code	Description	Weight [g]
0950254004	Rodless cylinder limit switch and shock absorbers Ø 25	260
0950324004	Rodless cylinder limit switch and shock absorbers Ø 32	460
0950404004	Rodless cylinder limit switch and shock absorbers Ø 40	730
0950634004	Rodless cylinder limit switch and shock absorbers Ø 63	1620

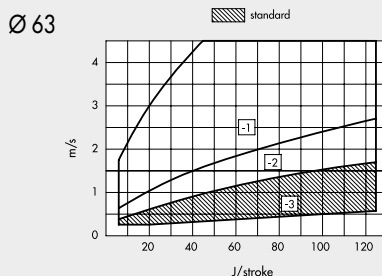
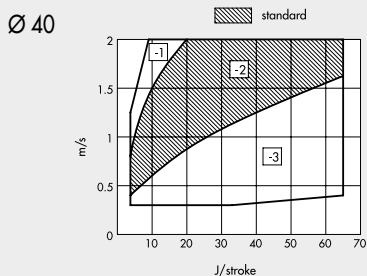
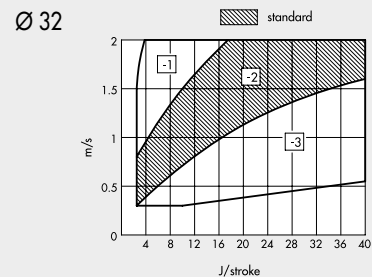
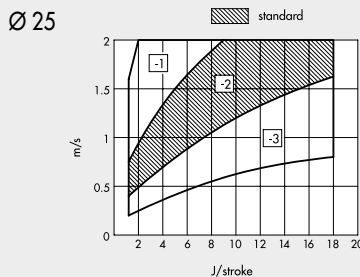
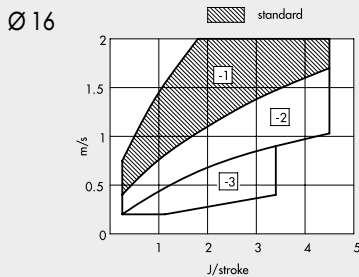
Note: Supplied complete with 1 shock absorber support, 1 standard shock absorber, 1 shock absorber nut, 1 limit switch grub screw, 1 grub screw nut (2 for Ø 63), 1 bracket, 1 bracket screw, 4 locking grub screws (for Ø 25), 4 locking plates and 4 screws (for Ø 32 and Ø 40)

SHOCK ABSORBERS



Code	Description	Ø
0950004003	Shock absorbers ECO15 MF1 + nut M12x1	16
0950004004	Shock absorbers ECO25 MC2 + nut M14x1.5	25
0950004005	Shock absorbers ECO50 MC2 + nut M20x1.5	32
0950004006	Shock absorbers ECO100 MF2 + nut M25x1.5	40
0950004007	Shock absorbers ECO125 MF3 + nut M36x1.5	63

GRAPHS TO HELP CHOOSE THE RIGHT SHOCK ABSORBERS



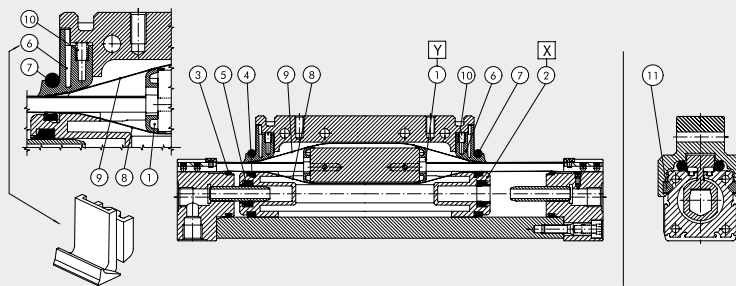
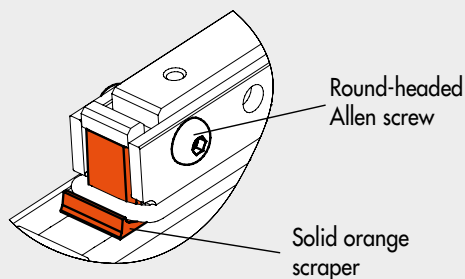
The dotted areas indicate that the SHOCK ABSORBERS is supplied standard. Other options can be selected depending on the speed [m/sec] and the maximum work force [J/stroke] to dissipate at each stroke. Refer to the diagrams above to select the correct option.

SPARE PARTS FOR STD RODLESS CYLINDERS, "V" GUIDE, BALL RECIRCULATING GUIDE, DOUBLE

ACTUATORS

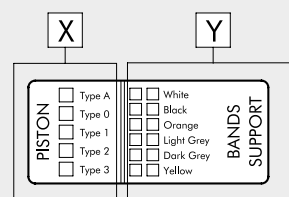
ACCESSORIES AND SPARE PARTS FOR RODLESS CYLINDERS

"LAST RELEASE" CYLINDER



- ① Bands support Kit
- ② Piston kit
- ③ ④ ⑤ ⑥ ⑦ ⑩ NBR gaskets Kit (FKM/FPM for ⑦)
- ③ ④ ⑤ ⑥ ⑦ ⑩ FKM/FPM gaskets Kit
- ⑧ ⑨ Bands Kit (inner/outer)
- ⑪ "V" guide plate kit

Spare parts label on one cylinder side



BANDS SUPPORT KIT POS 1 (Y)

Ø	Code White	Code Black	Code Orange	Code Light grey	Code Dark grey	Code Yellow
16	0090165080	0090165081	0090165082	0090165083	0090165084	0090165085
25	0090255080	0090255081	0090255082	0090255083	0090255084	0090255085
32	0090325080	0090325081	0090325082	0090325083	0090325084	0090325085
40	0090405080	0090405081	0090405082	0090405083	0090405084	0090405085
63	0090635080	0090635081	0090635082	0090635083	0090635084	0090635085

BANDS KIT (INNER AND OUTER) POS 8-9

Ø	Code
16	0090166...
25	0090256...
32	0090326...
40	0090406...
63	0090636...

"V" GUIDE PLATE KIT POS 11

Ø	Code
25	0090255060
32	0090325060
40	0090325060
63	0090635060

Complete the code with the 4 figure cylinder stroke

PISTON KIT POS 2 (X)

Ø	Code Type 0 (0 rings)	Code Type 1 (1 rings)	Code Type 2 (2 rings)	Code Type 3 (3 rings)	Code Type A (4 rings)
16	0090165015	0090165016	0090165017	0090165018	-
25	0090255015	0090255016	0090255017	0090255018	0090255019
32	0090325015	0090325016	0090325017	0090325018	0090325019
40	0090405015	0090405016	0090405017	0090405018	-
63	0090635015	0090635016	0090635017	0090635018	-

NBR GASKET KIT POS 3-4-5-6-7-10

Ø	Code
16	0090165022
25	0090255022
32	0090325022
40	0090405022
63	0090635022

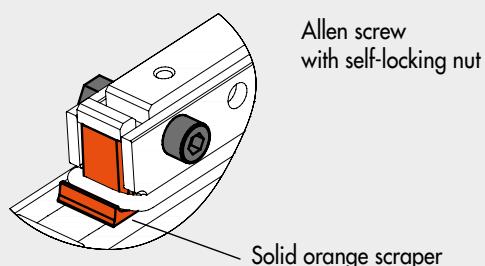
FKM/FPM GASKET KIT POS 3-4-5-6-7-10

Ø	Code
16	0090165023
25	0090255023
32	0090325023
40	0090405023
63	0090635023

NOTES

If the ends of the carriage appear as below indicated, please contact our commercial department for the spare parts

"INTERMEDIATE RELEASE"



"OLD RELEASE"

