

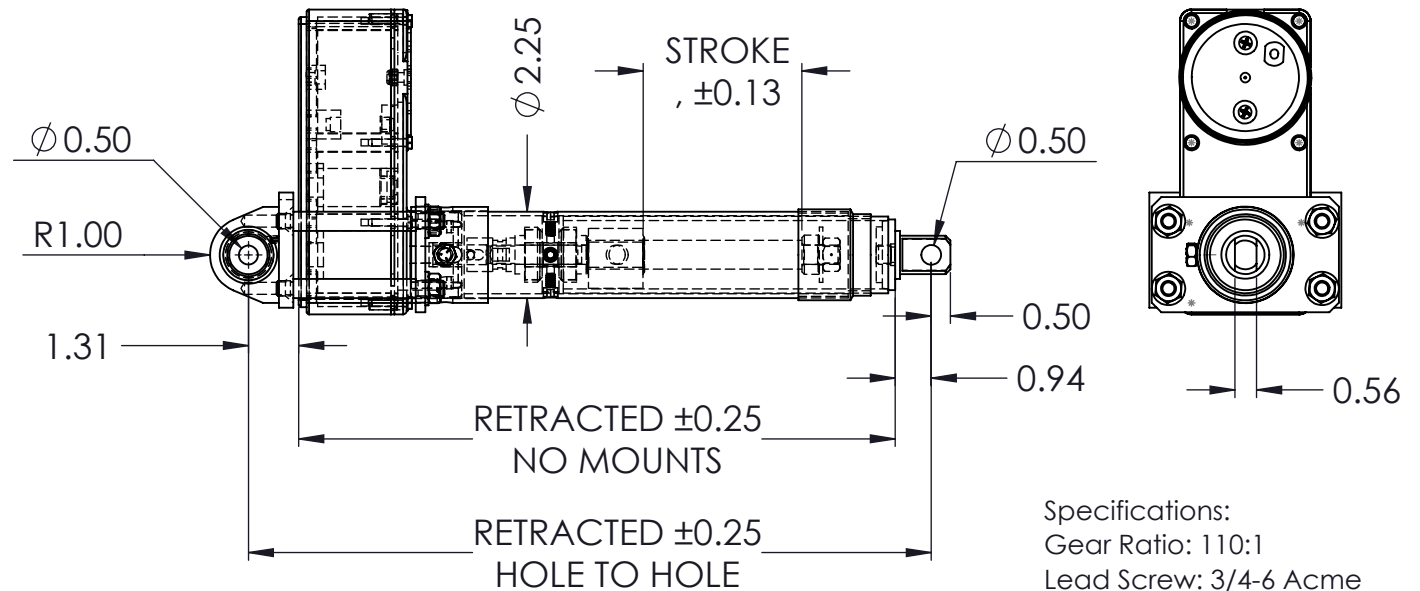
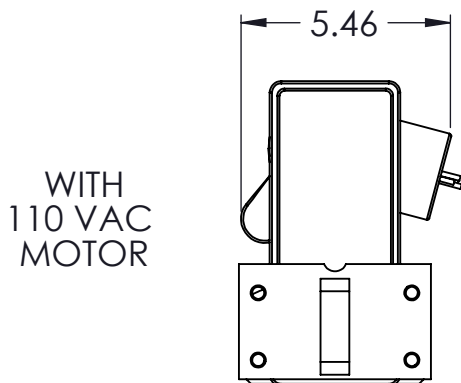
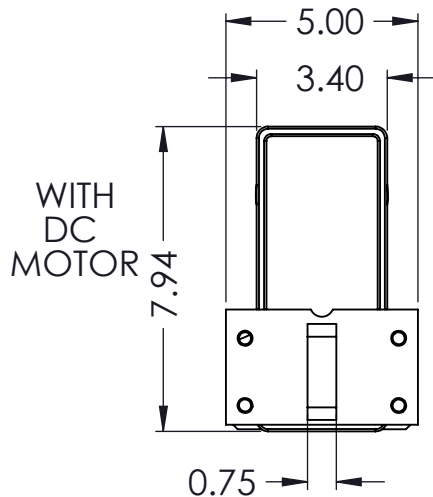
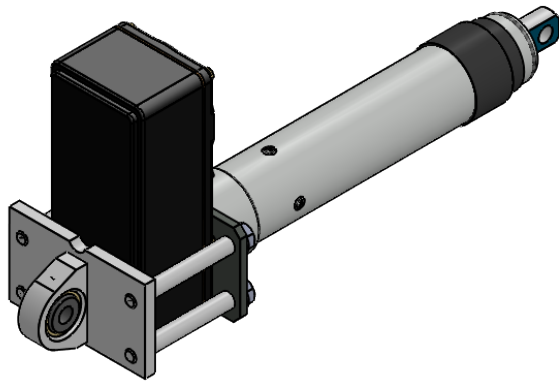
(A) SERIES INLINE ACTUATORS

OPT (A) CLASS	OPT (S) STROKE	OPT (R) RATIO	OPT (M) MOTOR	RETRACTED HOLE TO HOLE	RETRACTED NO MOUNTS
	4	34:1	12 VDC	17.75	15.50
	6	110:1	24 VDC	19.75	17.50
	8		110 VAC	21.75	19.50
	12		220 VAC	25.75	23.50
	18			31.75	29.50

A SERIES (INLINE) ORDERING INFORMATION:

* ORDER FORMAT AN-xxS-xxR-MOTOR

* SAMPLE ORDER AN-04S-110R-12VDC



Specifications:
 Gear Ratio: 110:1
 Lead Screw: 3/4-6 Acme
 Nut Material: Powder Metal
 Speed @ No Load:
 8.788 in/min or .147 in/sec

Torque Setting: 280 - 310 in/lbs

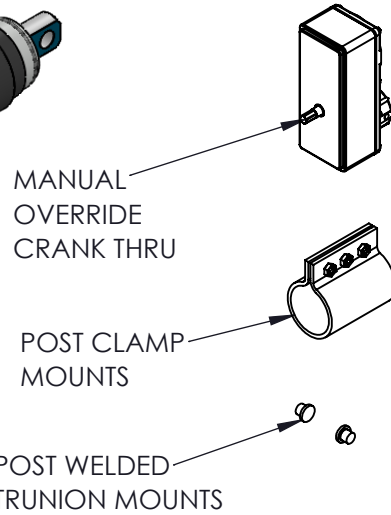
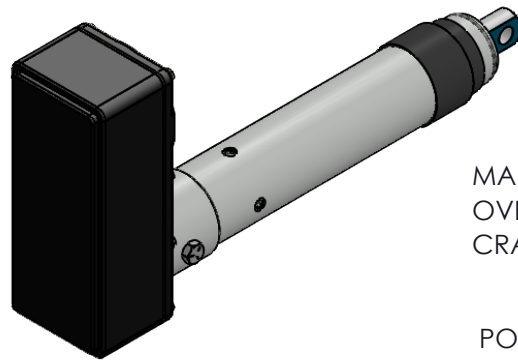
Heavy Duty: (AN) Series (INLINE)

- Rating of 3000 Lbs. (Push) - (Pull)
- Static loading of 5000 Lbs.
- Gear ratio designed for (110:1) Optional 34:1
- Dynamic loading limited to capacity of gear ratios.
- Motor options: 12, 24 VDC or 110, 220 VAC

BURR Engineering
 Battle Creek Mi, USA SW2015

(A) SERIES BOLT ON ACTUATORS

OPTIONS



MANUAL
OVERRIDE
CRANK THRU

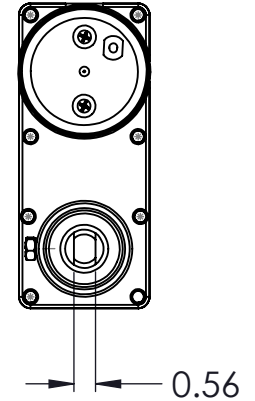
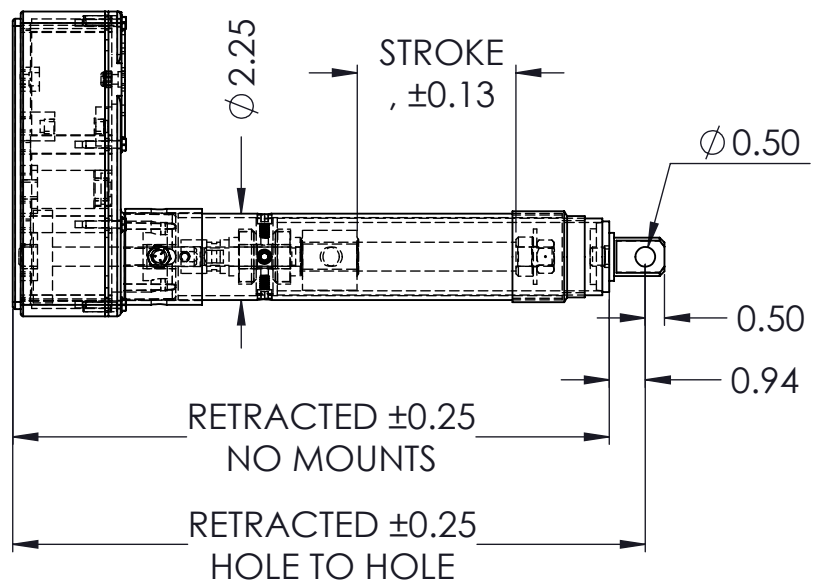
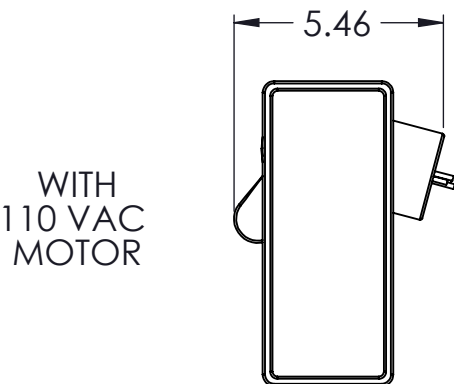
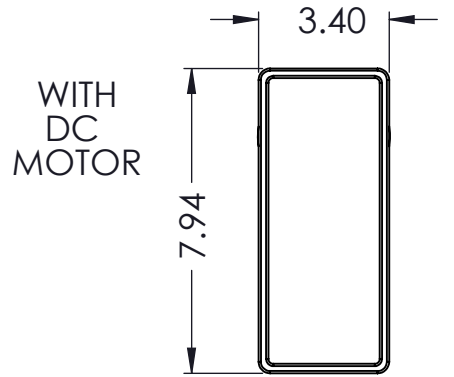
POST CLAMP
MOUNTS

POST WELDED
TRUNION MOUNTS

OPT (A) CLASS	OPT (S) STROKE	OPT (R) RATIO	OPT (M) MOTOR	RETRACTED END TO HOLE	RETRACTED NO MOUNTS
	4	34:1	12 VDC	16.44	15.50
	6	110:1	24 VDC	18.44	17.50
	8		110 VAC	20.44	19.50
	12		220 VAC	24.44	23.50
	18			30.44	29.50

A SERIES (BOLT ON) ORDERING INFORMATION:

- * ORDER FORMAT AB-xxS-xxR-MOTOR
- * SAMPLE ORDER AB-04S-110R-12VDC



- Heavy Duty: (AB) Series (BOLT ON)**
- Rating of 3000 Lbs. (Push) - (Pull)
 - Static loading of 5000 Lbs.
 - Gear ratio designed for (110:1) Optional 34:1
 - Dynamic loading limited to capacity of gear ratios.
 - Motor options: 12, 24 VDC or 110, 220 VAC

Specifications:
 Gear Ratio: 110:1
 Lead Screw: 3/4-6 Acme
 Nut Material: Powder Metal
 Speed @ No Load:
 8.788 in/min or .147 in/sec

Torque Setting: 280 - 310 in/lbs